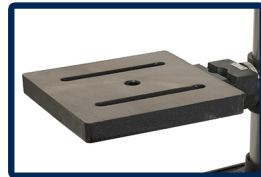




30-140 34" Benchttop Drill Press



Five Available Spindle Speeds



7-3/4" x 7-3/4" Work Surface



5/8" Chuck



Sturdy Cast Iron Base



Head Tilts 45° Right and 90° Left



Head Moves Forward and Back

• SPECIFICATIONS

TYPE.....	BENCH
MOTOR.....	1/3 HP, TEFC
AMPS.....	5.5
VOLTS.....	120V, 60 Hz
RPM.....	1,720
SWING.....	34"
CHUCK SIZE.....	5/8"
CHUCK TAPER.....	JT3
DRILLING CAPACITY.....	5/8"
SPINDLE TRAVEL.....	3-1/8"
SPINDLE TAPER.....	MT2
HEAD ROTATES.....	360°
HEAD TILT.....	45° RIGHT, 90° LEFT
SPEEDS.....	5
SPEED RANGE (RPM).....	620 - 3,100
QUILL DIAMETER.....	2-3/16"

• OVERALL

TABLE.....	7-3/4" x 7-3/4"
TABLE TILTS.....	45°
TABLE ROTATES.....	360°
MAXIMUM CHUCK TO TABLE.....	10-3/4"
MAXIMUM CHUCK TO BASE.....	15-1/4"
COLUMN DIAMETER.....	2-5/16"
HEIGHT.....	37"
BASE SIZE.....	13-3/4" x 8-1/2"
NET WEIGHT.....	84 LBS.
SHIPPING WEIGHT.....	90 LBS.
SHIPPING CARTON.....	35" x 14" x 12-1/2"
WARRANTY.....	5 YEARS